

Parts list

Code

| | |
|--|---------|
| Carbon brushes (2) | 0504 |
| Ball bearing | 0601 |
| Squeezing washer | 0726 |
| Safety button, return spring | 0768 |
| Strain relief 230 V | 0950 |
| Strain relief 230 V | 0950.1 |
| Filter C.E.M. 230 V | 0999.20 |
| Warning label | 1017 |
| Dynamic label | 1021 |
| ID label 230 V | 1069 |
| ID label 115 V | 1070 |
| Micro switch | 1237 |
| Power on indicator light 230 V | 1241 |
| Power on indicator light 115 V | 1241.1 |
| Control lever | 2001 |
| Control lever protector | 2002 |
| Circuit board 230 V (4 switches + capacitor) | 2003 |
| Circuit board 115 V (4 switches + capacitor) | 2003.1 |
| Upper half handle (button side) | 2004 |
| Upper half handle (label side) | 2005 |
| Motor housing + carbon brush holders | 2006 |
| Stator 230 V (carter + carbon brush holders) | 2011 |
| Stator 115 V (carter + carbon brush holders) | 2011.1 |
| Power cord 230 V > 2002 | 2012 |
| Power cord 115 V > 2002 | 2012.1 |
| Power cord (English) > 2002 | 2012.2 |
| Power cord (Australian) > 2002 | 2012.3 |
| Lower aluminum housing | 2020 |
| Variable speed knob | 2021 |
| Complete handle 230 V | 2022 |
| Complete handle 115 V | 2022.1 |
| Variable speed circuit board 230 V | 2023 |
| Variable speed circuit board 115 V | 2023.1 |
| Safety plug | 45710 |
| Brace screws (4) | 7903 |
| Fan | 7933 |
| Rotor 115 V | 9008.11 |
| Rotor 230 V | 9008.12 |
| Power cord 230 V < 2002 | 9011 |
| Handle screws (4) | 9014 |
| Field brace screws (2) | 9023 |
| Motor ball bearing sleeve | 9025 |
| Braces (4) | 9026 |
| Rotor coupler | 9028 |
| Power cord 115 V < 2002 | 9040 |
| Carbon brush wires 230 V | 9043 |
| Power cord (Australian) < 2002 | 9066 |
| Power cord (English) < 2002 | 9067 |
| Carbon brush wires 115 V | 9143 |
| BM 2000 motor block (see machine catalogue) | AC001 |

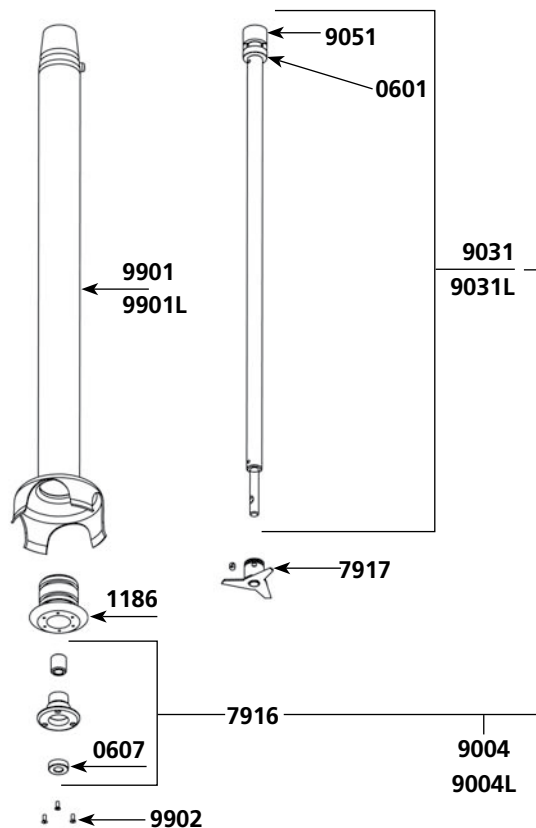
MF 2000 MIXERS

551.002 - 551.003



MF 2000 mixer tool (551.002)

| Parts list | Code |
|--|-------|
| Ball bearing | 0601 |
| Waterproof seal | 0607 |
| Bearing holder + seal | 1186 |
| Emulsifying blade | 7910 |
| Lower bearing assembly | 7916 |
| Cutter blade w/ screw | 7917 |
| Lower bearing screws (3) | 7950 |
| Shaft, lower bearing & cutter assembly | 9004 |
| Shaft | 9031 |
| Coupling casing + pin | 9051 |
| Tube assembly | 9901 |
| Lower bearing screws (3) | 9902 |
| M 90 Complete Mixer tool (see machine catalogue) | AC002 |

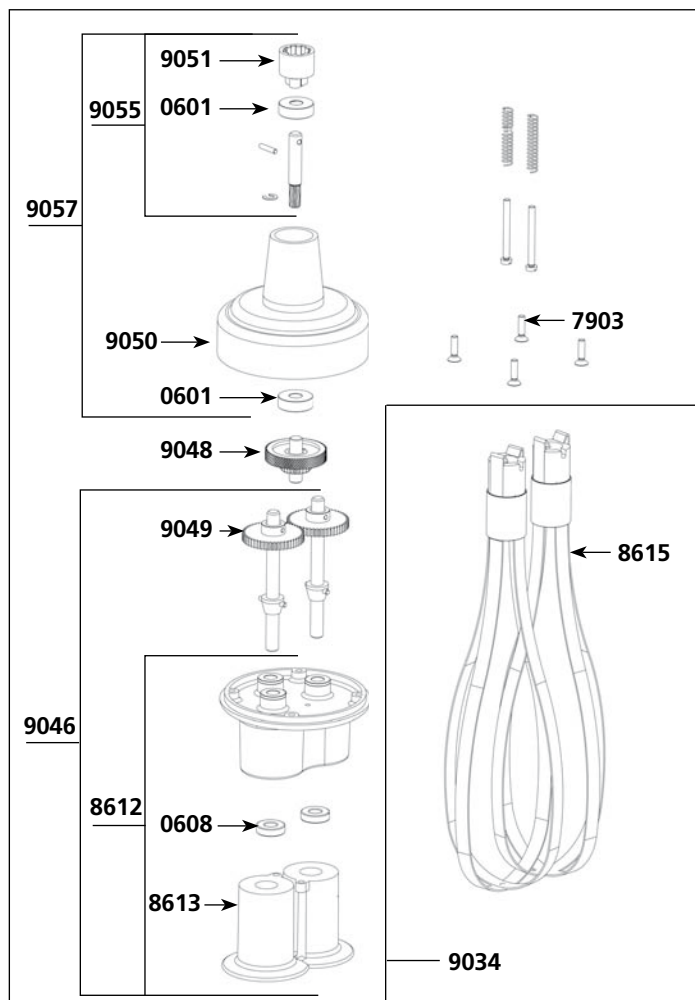


M500 mixer tool

| Parts list | Code |
|--|-------|
| Shaft, lower bearing & cutter assembly | 9004L |
| Shaft | 9031L |
| Tube assembly | 9901L |

MF 2000 whisk tool (551.003)

| Parts list | Code |
|--|-------|
| Ball bearing | 0601 |
| Waterproof seal | 0608 |
| Pin 3 X 20 | 0744 |
| Pin 3 X 14 | 0745 |
| Brace screws (4) | 7903 |
| Holder + plastic ejector + seal | 8612 |
| Plastic ejector (pair) | 8613 |
| Whisk (Pair) | 8615 |
| Reduction gear assembly | 9034 |
| Lower casing w/ o middle gear | 9046 |
| Central double gear & shaft | 9048 |
| Single gear (2) | 9049 |
| Upper plastic casing | 9050 |
| Coupling casing + pin | 9051 |
| Equipped upper shaft | 9055 |
| Complete upper casing | 9057 |
| F 90 Complete whisk tool (see machine catalogue) | AC003 |



Wall bracket

| Parts list | Code |
|--------------|------|
| Wall bracket | 0880 |